

16 June 2008

PRESS RELEASE

EURO AREA SECURITIES ISSUES STATISTICS: APRIL 2008

The annual growth rate of the outstanding amount of debt securities issued by euro area residents was 7.1% in April 2008, the same as in March. For the outstanding amount of quoted shares issued by euro area residents, the annual growth rate decreased from 1.3% in March 2008 to 1.1% in April.

New issuance of debt securities by euro area residents totalled EUR 1,132 billion in April 2008 (see Table 1 and Chart 1). As redemptions came to EUR 1,053 billion, net issues amounted to EUR 79 billion (see Table 1). The annual growth rate of outstanding debt securities issued by euro area residents was 7.1% in April 2008, the same as in March (see Table 1 and Chart 3).

As regards the sectoral breakdown, the annual growth rate of outstanding debt securities issued by non-financial corporations decreased from 7.8% in March 2008 to 6.6% in April (see Table 2 and Chart 4). For the monetary financial institutions (MFIs) sector, this growth rate decreased from 7.7% in March 2008 to 7.2% in April. The annual growth rate of outstanding debt securities issued by financial corporations other than MFIs increased from 21.3% in March 2008 to 23.5% in April. For the general government, this growth rate was 2.8% in April 2008, compared with 2.7% in March.

As regards the maturity breakdown, the annual growth rate of outstanding short-term debt securities decreased from 23.2% in March 2008 to 21.1% in April (see Table 1 and Chart 3). The annual growth rate of outstanding short-term debt securities issued by MFIs decreased from 29.9% to 27.3% during the same period (see Table 2). For long-term debt securities, the annual growth rate increased from 5.3% in March 2008 to 5.5% in April. The annual growth rate of outstanding long-term debt securities issued by MFIs decreased from 4.3% to 4.1% during the same period. The annual growth rate of outstanding fixed rate long-term debt securities was 2.7% in April 2008, compared with 2.6% in March. The annual growth rate of outstanding variable rate long-term debt securities increased from 12.1% in March 2008 to 12.4% in April.

Concerning the currency breakdown, the annual growth rate of outstanding euro-denominated debt securities was 7.4% in April 2008, compared with 7.3% in March. For debt securities in other currencies, this growth rate decreased from 5.1% in March 2008 to 4.7% in April (see Table 1).

The seasonally adjusted three-month annualised growth rate of outstanding debt securities issued by euro area residents increased from 2.3% in March 2008 to 3.9% in April (see Table 3 and Chart 5).

New issuance of quoted shares by euro area residents totalled EUR 2.0 billion in April 2008 (see Table 4). As redemptions came to EUR 3.0 billion, net redemptions amounted to EUR 0.9 billion. The annual growth rate of the outstanding amount of quoted shares issued by euro area residents (excluding valuation changes) decreased from 1.3% in March 2008 to 1.1% in April (see Table 4 and Chart 6). The annual growth rate of quoted shares issued by non-financial corporations decreased from 1.2% in March 2008 to 0.9% in April. For monetary financial institutions, it increased from 1.1% in March 2008 to 1.3% in April. For financial corporations other than MFIs, this growth rate was 2.2% in April 2008, compared with 2.3% in March.

The outstanding amount of quoted shares issued by euro area residents totalled EUR 5,738 billion at the end of April 2008. Compared with EUR 6,761 billion at the end of April 2007, this represents an annual decrease of 15.1% in the value of the stock of quoted shares in April 2008, compared with an annual decrease of 14.6% in March, mainly due to market valuation changes.

Unless specified otherwise, data relate to non-seasonally adjusted statistics. In addition to the developments for April 2008, this press release may incorporate minor revisions to the data for previous periods. A complete set of updated securities issues statistics is available on the "Money, banking and financial markets" pages of the "Statistics" section of the ECB's website (<http://www.ecb.int/stats/money/securities/html/index.en.html>). These data, as well as euro area data in accordance with the composition of the euro area at the time of the reference period, can be downloaded using the ECB's Statistical Data Warehouse (SDW).

Data for the period up to April 2008 will also be published in the July 2008 issues of the ECB's Monthly Bulletin and Statistics Pocket Book. The next press release on euro area securities issues will be published on 16 July 2008.

European Central Bank

Directorate Communications, Press and Information Division

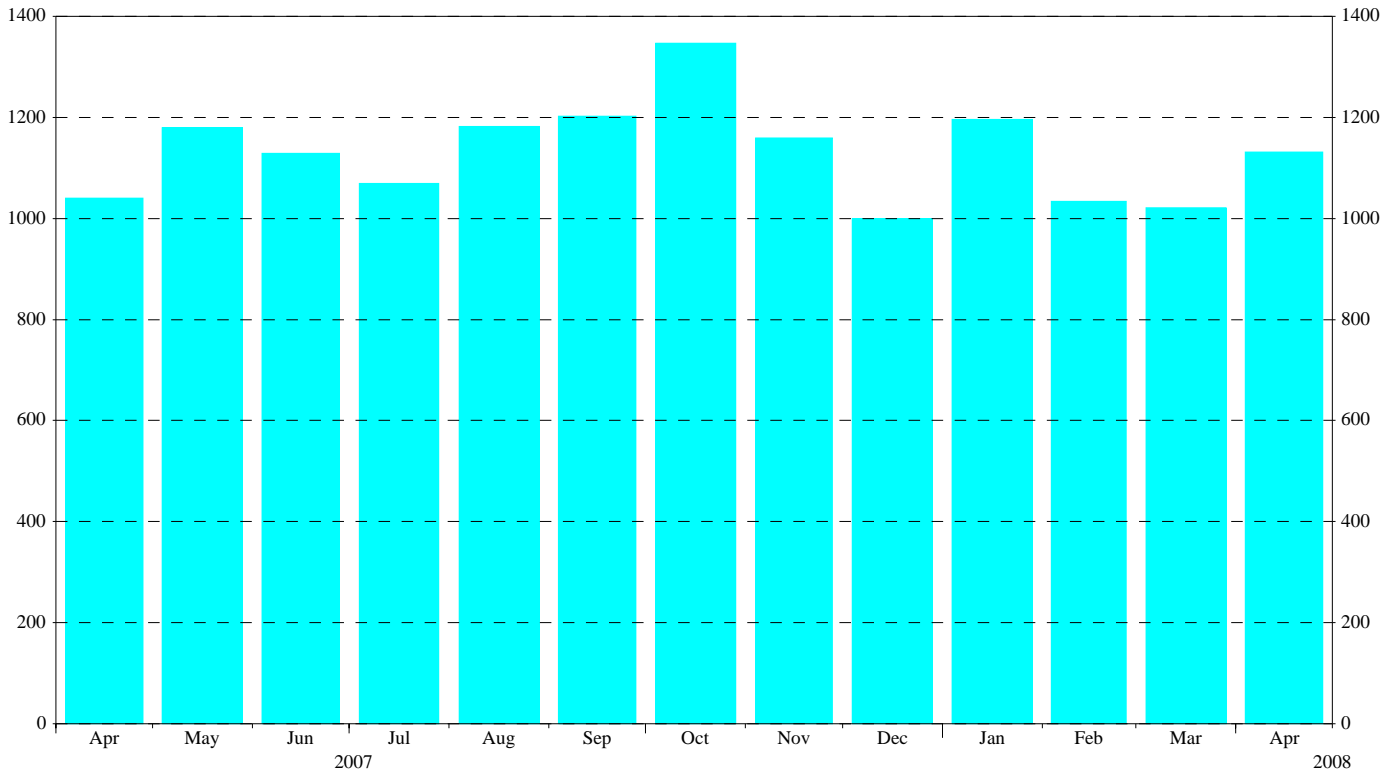
Kaiserstrasse 29, D-60311 Frankfurt am Main

Tel.: +49 69 1344 7455, Fax: +49 69 1344 7404

Internet: <http://www.ecb.int>

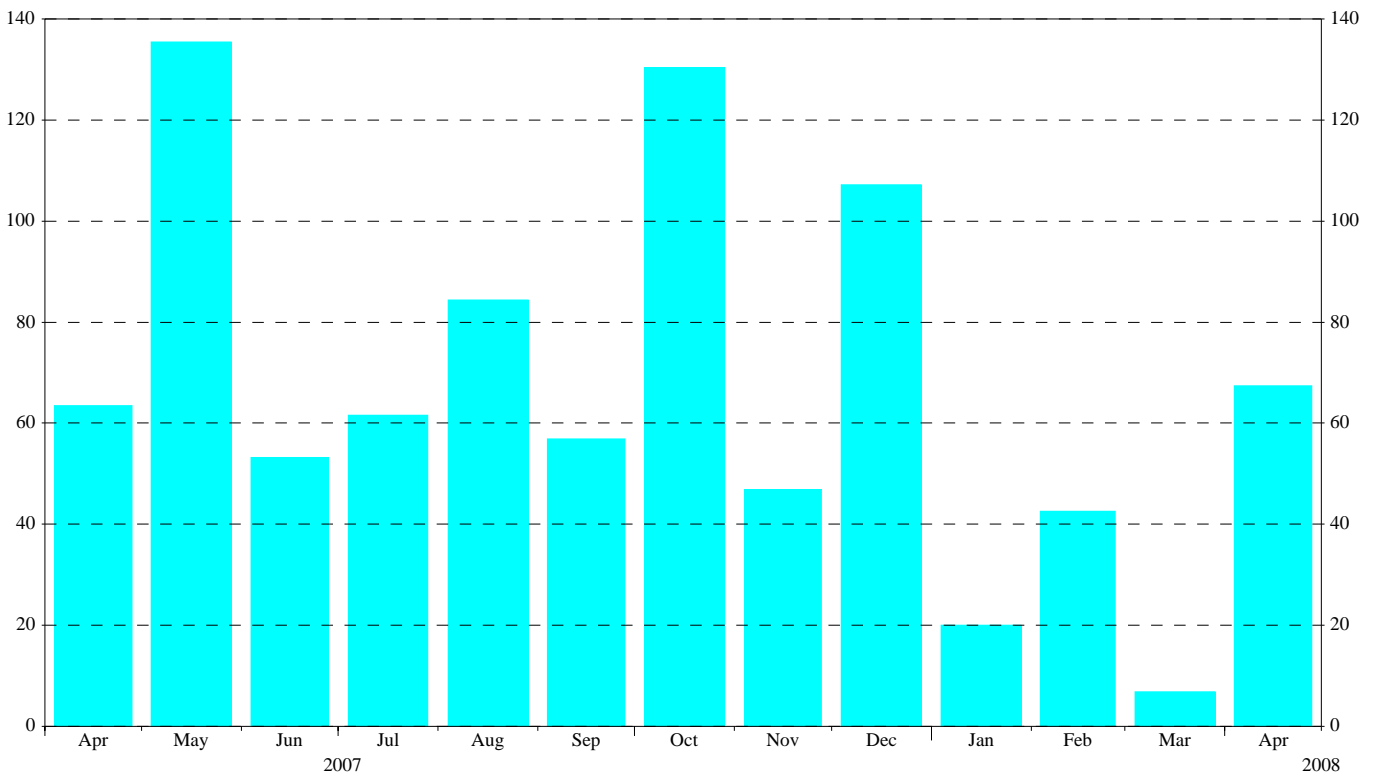
Reproduction is permitted provided that the source is acknowledged.

Chart 1: Total gross issuance of debt securities by euro area residents
(EUR billions; transactions during the month; nominal values)



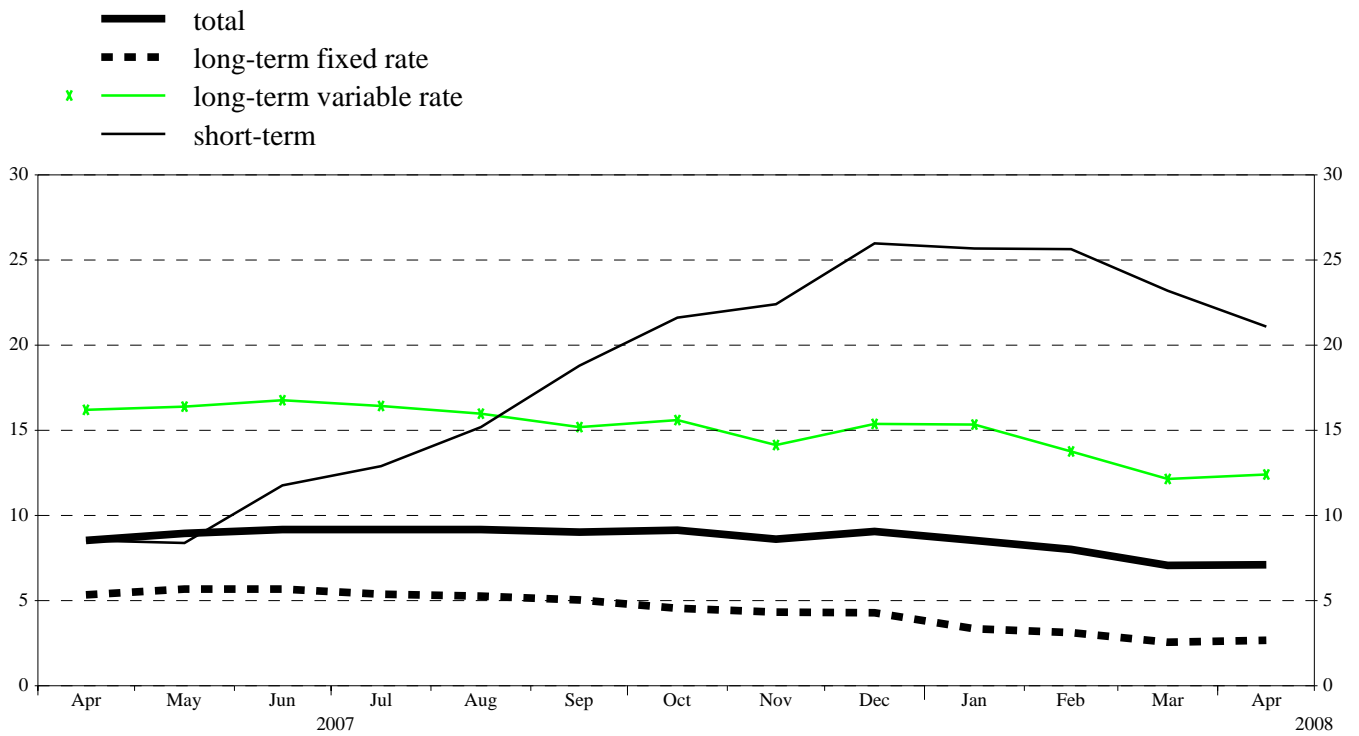
Source: ECB securities issues statistics.

Chart 2: Total net issuance of debt securities by euro area residents
(EUR billions; transactions during the month; nominal values; seasonally adjusted)



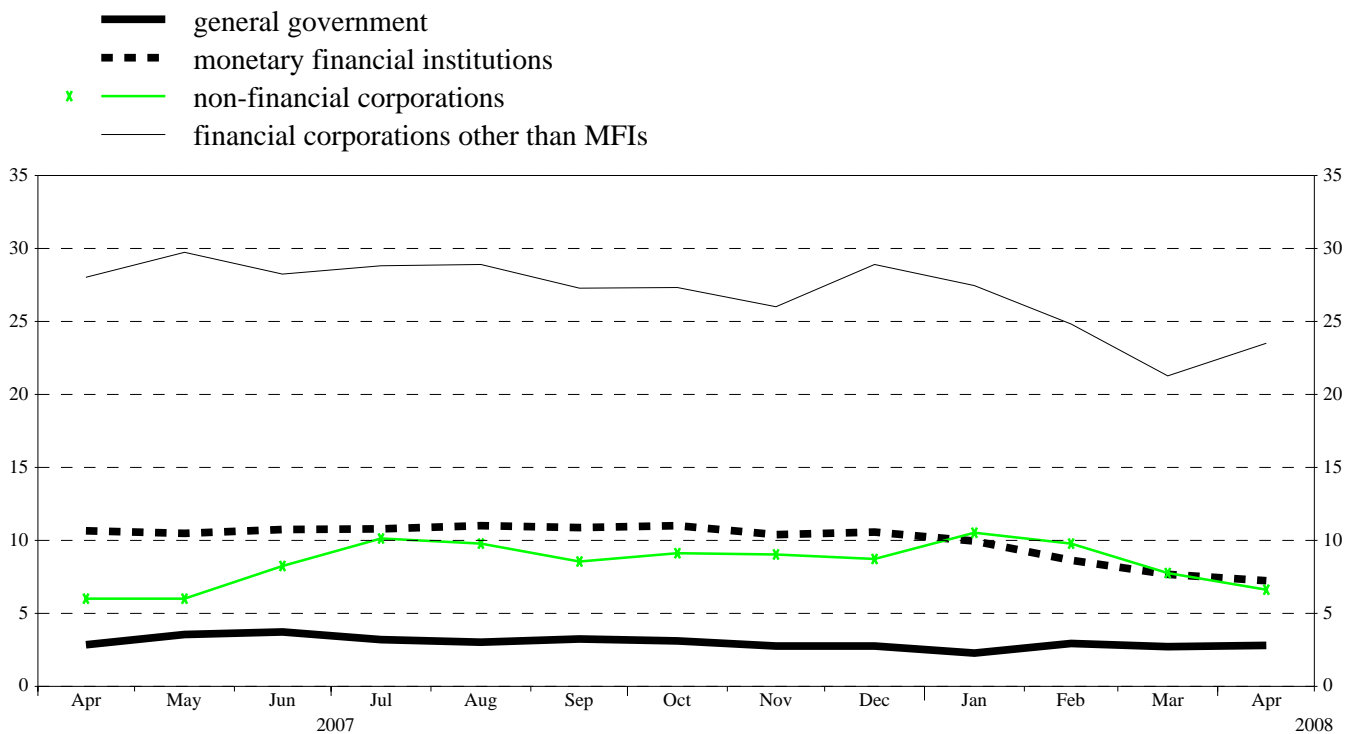
Source: ECB securities issues statistics.

Chart 3: Annual growth rates of debt securities issued by euro area residents, by original maturity
(percentage changes)



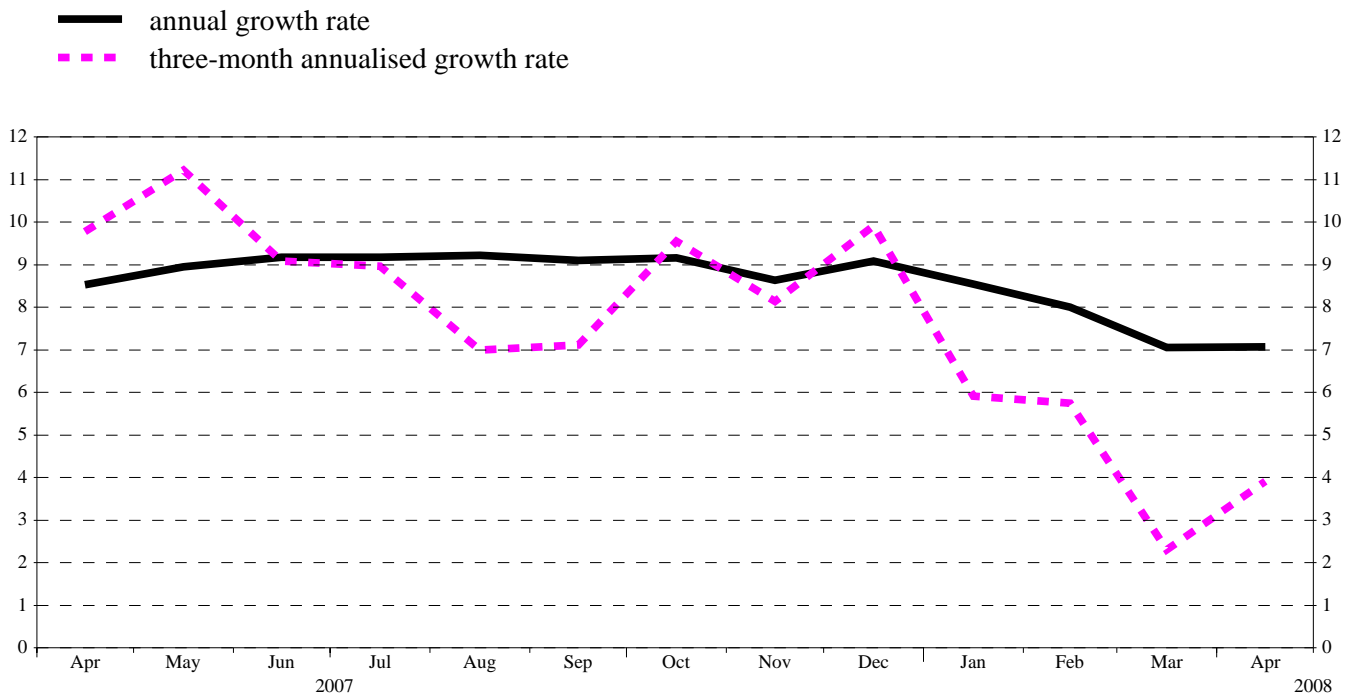
Source: ECB securities issues statistics.

Chart 4: Annual growth rates of debt securities issued by euro area residents, by sector
(percentage changes)



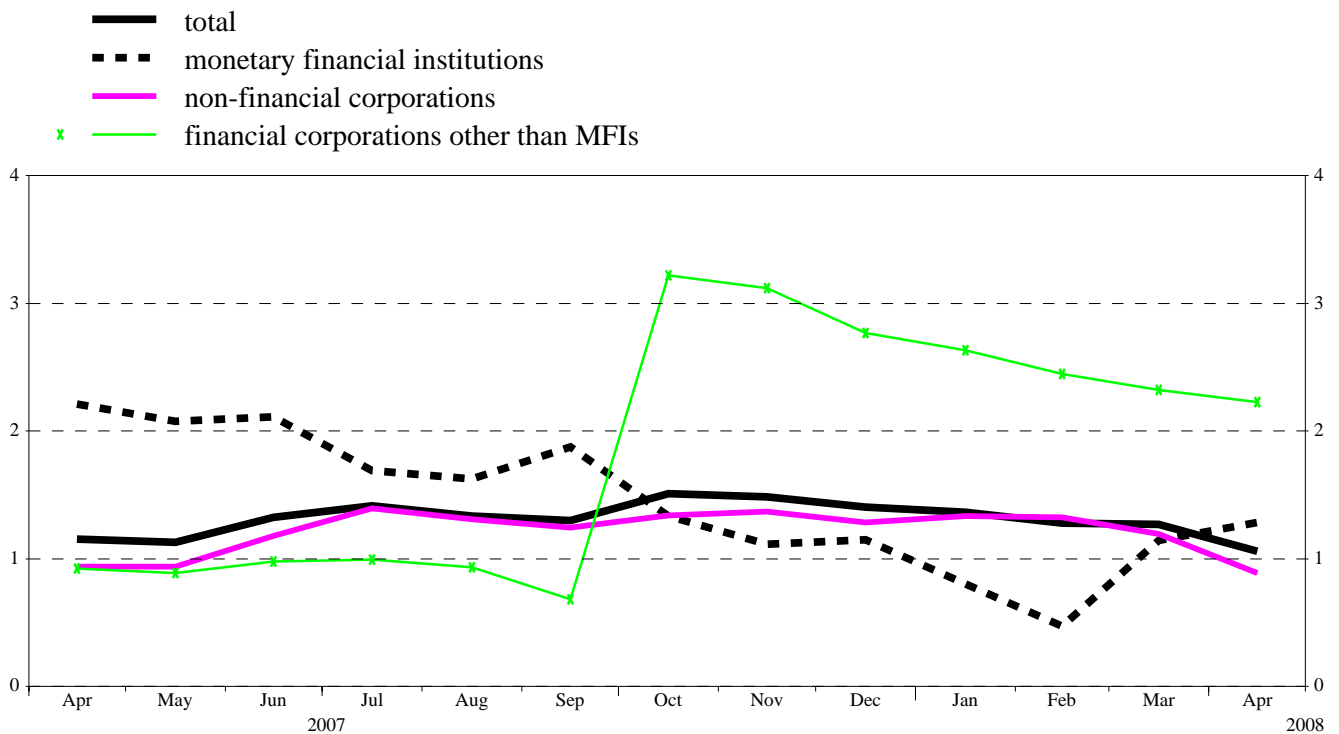
Source: ECB securities issues statistics.

Chart 5: Growth rates of debt securities issued by euro area residents, seasonally adjusted
(percentage changes)



Source: ECB securities issues statistics.

Chart 6: Annual growth rates of quoted shares issued by euro area residents, by sector
(percentage changes)



Source: ECB securities issues statistics.

Table 1**Debt securities issued by euro area residents,¹⁾ by currency and original maturity²⁾***(EUR billions; nominal values)*

	Amounts outstanding	Net issues	Gross issues	Redemptions	Net issues	Amounts outstanding	Gross issues	Redemptions	Net issues	Amounts outstanding	Gross issues	Redemptions	Net issues	Annual growth rates of outstanding amounts ⁵⁾											
	Apr. 2007		May 2007 - Apr. 2008 ⁴⁾			Mar. 2008				Apr. 2008				2006	2007	2007 Q2	2007 Q3	2007 Q4	2008 Q1	2007 Nov.	2007 Dec.	2008 Jan.	2008 Feb.	2008 Mar.	2008 Apr.
Total	11,541.6	72.4	1,137.4	1,069.1	68.2	12,202.6	1,021.6	976.7	44.9	12,282.2	1,131.6	1,052.9	78.8	7.4	8.8	8.8	9.2	8.9	8.2	8.6	9.1	8.5	8.0	7.1	7.1
of which in euro	10,257.3	55.6	1,078.8	1,015.7	63.2	10,945.6	966.3	919.1	47.3	11,012.5	1,067.0	1,000.0	67.0	6.7	8.3	8.2	8.6	8.7	8.4	8.5	9.1	8.6	8.3	7.3	7.4
in other currencies	1,284.3	16.8	58.5	53.5	5.0	1,257.0	55.2	57.6	-2.4	1,269.7	64.7	52.9	11.7	13.8	12.9	13.4	13.8	10.8	6.9	9.9	8.8	7.9	5.9	5.1	4.7
Short-term	1,162.1	27.2	954.3	933.9	20.5	1,398.9	862.7	840.3	22.4	1,404.4	907.1	897.9	9.2	5.3	13.0	8.9	14.5	22.1	25.3	22.4	26.0	25.7	25.7	23.2	21.1
of which in euro	983.1	23.9	915.9	896.5	19.4	1,212.6	822.4	801.0	21.4	1,215.1	860.0	857.5	2.5	5.3	13.4	9.1	14.2	23.5	28.7	24.0	28.8	28.9	29.6	26.5	23.7
in other currencies	178.9	3.3	38.4	37.4	1.1	186.4	40.3	39.3	1.0	189.3	47.1	40.5	6.7	4.9	10.8	7.1	15.8	14.1	6.9	13.5	10.7	8.0	5.0	5.1	6.9
Long-term ³⁾	10,379.5	45.2	183.0	135.3	47.7	10,803.6	158.9	136.4	22.4	10,877.8	224.5	154.9	69.6	7.6	8.3	8.8	8.6	7.5	6.4	7.1	7.4	6.7	6.1	5.3	5.5
of which in euro	9,274.2	31.7	162.9	119.2	43.8	9,733.0	144.0	118.1	25.8	9,797.4	207.0	142.5	64.5	6.8	7.7	8.2	8.0	7.2	6.3	6.9	7.2	6.6	6.2	5.3	5.7
in other currencies	1,105.3	13.5	20.1	16.1	4.0	1,070.7	14.9	18.3	-3.4	1,080.4	17.5	12.4	5.1	15.1	13.1	14.2	13.4	10.3	6.8	9.3	8.5	7.8	5.9	5.1	4.3
of which fixed rate in euro	7,201.2	32.2	103.8	87.8	16.0	7,304.2	87.2	92.1	-4.9	7,347.7	142.5	101.4	41.0	4.5	5.2	5.5	5.4	4.5	3.3	4.3	4.3	3.4	3.1	2.6	2.7
in other currencies	6,508.0	27.4	91.4	78.3	13.1	6,625.7	79.5	82.6	-3.1	6,660.3	131.0	96.1	34.9	3.8	4.6	4.9	4.7	4.1	3.0	3.9	3.9	2.9	2.9	2.3	2.4
of which variable rate in euro	2,732.2	18.1	64.4	36.2	28.3	3,027.2	58.1	37.0	21.2	3,057.6	70.7	42.7	28.0	16.1	15.7	16.4	16.1	15.0	14.3	14.2	15.4	15.4	13.8	12.1	12.4
in other currencies	2,421.3	9.6	57.8	30.4	27.4	2,722.3	52.3	28.9	23.5	2,752.6	65.9	36.0	30.0	14.9	15.0	15.7	15.5	14.8	14.9	14.0	15.8	15.9	14.5	12.8	13.6
	310.9	8.5	6.7	5.8	0.9	304.9	5.8	8.1	-2.3	305.0	4.7	6.7	-2.0	27.0	21.2	22.5	20.9	16.5	9.5	15.4	11.8	10.7	8.3	6.9	3.4

Source: ECB securities issues statistics.

1) Data coverage for euro area residents is estimated to be around 95% of total issuance.

2) "Short-term" means securities with an original maturity of one year or less (in exceptional cases two years or less). Securities with a longer original maturity, or with optional maturity dates, the latest of which is more than one year away, or with indefinite maturity dates, are classified as long-term.

3) The residual difference between total long-term debt securities and fixed and variable rate long-term debt securities consists of zero coupon bonds and revaluation effects.

4) Monthly averages of the transactions during this period.

5) Annual growth rates are based on financial transactions that occur when an institutional unit incurs or redeems liabilities. The annual growth rates therefore exclude the impact of reclassifications, revaluations, exchange rate variations and any other changes which do not arise from transactions.

Table 2

Debt securities issued by euro area residents in all currencies, ¹⁾ by issuing sector ²⁾ and maturity ³⁾

(EUR billions; nominal values)

	Amounts outstanding	Net issues	Gross issues	Redemptions	Net issues	Amounts outstanding	Gross issues	Redemptions	Net issues	Amounts outstanding	Gross issues	Redemptions	Net issues	Annual growth rates of outstanding amounts ⁴⁾											
	Apr. 2007	May 2007 - Apr. 2008 ⁵⁾				Mar. 2008				Apr. 2008				2006	2007	2007 Q2	2007 Q3	2007 Q4	2008 Q1	2007 Nov.	2007 Dec.	2008 Jan.	2008 Feb.	2008 Mar.	2008 Apr.
Total	11,541.6	72.4	1,137.4	1,069.1	68.2	12,202.6	1,021.6	976.7	44.9	12,282.2	1,131.6	1,052.9	78.8	7.4	8.8	8.8	9.2	8.9	8.2	8.6	9.1	8.5	8.0	7.1	7.1
MFIs	4,815.8	49.8	835.4	806.4	29.0	5,094.9	727.2	721.2	6.0	5,125.8	781.3	749.1	32.1	9.1	10.7	10.6	10.9	10.7	9.2	10.4	10.6	10.0	8.7	7.7	7.2
Short-term	643.0	15.6	752.7	738.0	14.6	817.2	658.5	656.7	1.8	816.8	679.5	675.9	3.6	14.9	17.5	10.3	16.8	27.5	31.7	28.4	34.5	32.0	30.9	29.9	27.3
Long-term	4,172.8	34.3	82.7	68.3	14.4	4,277.8	68.7	64.5	4.2	4,308.9	101.8	73.2	28.5	8.4	9.7	10.6	10.0	8.2	5.9	7.7	7.1	6.6	5.3	4.3	4.1
of which																									
Fixed rate	2,221.2	12.9	42.1	35.2	6.9	2,270.8	30.2	33.6	-3.4	2,290.4	57.7	39.1	18.6	4.7	7.1	7.5	8.0	6.7	5.3	6.5	6.8	6.0	4.8	3.5	3.7
Variable rate	1,578.1	15.6	29.6	23.6	6.0	1,627.0	28.8	23.8	5.0	1,642.3	37.2	23.8	13.4	11.9	11.1	12.1	11.1	9.0	6.0	8.3	7.2	6.7	5.3	4.8	4.6
Non-MFI corporations	1,905.0	7.9	163.5	135.6	27.9	2,179.8	138.7	127.2	11.5	2,209.4	163.5	135.3	28.2	16.3	20.2	20.2	21.3	20.5	20.1	19.9	21.8	21.5	19.6	16.7	17.7
of which																									
Financial corporations other than MFIs	1,249.8	-1.3	40.3	16.0	24.3	1,491.0	31.3	16.3	14.9	1,517.7	42.9	17.2	25.7	25.8	28.0	29.0	28.5	27.2	25.7	26.0	28.9	27.5	24.8	21.3	23.5
Short-term	10.8	-0.5	5.1	3.4	1.7	30.9	3.2	2.9	0.4	30.7	3.3	3.5	-0.2	30.9	24.3	23.7	-6.5	29.9	108.0	37.0	49.3	48.9	168.8	173.8	185.0
Long-term	1,239.0	-0.8	35.2	12.6	22.6	1,460.1	28.1	13.5	14.6	1,486.9	39.6	13.7	25.9	25.7	28.0	29.0	28.9	27.1	24.9	25.9	28.7	27.2	23.4	19.9	22.1
of which																									
Fixed rate	576.5	8.6	7.2	4.8	2.4	582.6	6.0	4.8	1.2	587.3	9.9	5.5	4.3	13.9	17.8	19.9	17.6	13.5	8.6	12.6	11.4	10.4	6.9	5.8	5.0
Variable rate	649.4	-9.7	27.1	7.6	19.5	855.9	20.7	8.6	12.1	877.2	28.9	8.1	20.8	39.8	37.5	37.6	39.2	39.2	38.7	37.4	43.5	41.9	37.4	30.9	36.1
Non-financial corporations	655.3	9.2	123.2	119.6	3.6	688.8	107.4	110.9	-3.4	691.7	120.6	118.2	2.5	3.5	7.4	6.4	9.4	8.9	9.5	9.0	8.7	10.5	9.8	7.8	6.6
Short-term	113.3	7.1	115.8	114.2	1.6	133.4	103.2	101.9	1.4	133.1	113.0	113.4	-0.4	-4.9	16.3	13.6	23.2	24.6	31.7	23.5	29.1	36.5	31.6	25.6	17.4
Long-term	541.9	2.1	7.4	5.4	2.0	555.4	4.2	9.0	-4.8	558.5	7.7	4.8	2.9	5.2	5.8	4.9	6.9	6.0	5.4	6.3	5.2	5.9	5.7	4.2	4.4
of which																									
Fixed rate	411.9	-0.8	4.8	3.6	1.3	417.3	3.5	7.9	-4.4	420.3	7.0	4.3	2.7	0.8	3.7	2.7	4.7	4.9	4.2	5.3	4.4	4.6	4.5	2.8	3.7
Variable rate	116.6	3.1	2.5	1.6	0.9	127.2	0.8	1.1	-0.4	127.3	0.6	0.5	0.2	26.5	18.8	19.2	19.9	14.5	12.4	14.2	10.8	13.1	12.8	12.2	9.3
General government	4,820.8	14.6	138.4	127.2	11.3	4,927.9	155.7	128.3	27.4	4,947.2	186.8	168.4	18.4	3.1	3.0	3.2	3.3	3.0	2.7	2.8	2.8	2.3	2.9	2.7	2.8
of which																									
Central government	4,511.1	13.3	131.5	120.5	11.0	4,615.0	149.1	121.1	28.0	4,634.7	181.0	162.2	18.8	2.6	2.8	3.0	3.3	2.9	2.6	2.7	2.7	2.2	3.0	2.8	2.9
Short-term	390.2	4.6	77.2	74.9	2.4	411.0	95.0	75.5	19.5	417.0	107.1	101.3	5.8	-4.1	5.2	5.4	9.6	11.7	9.2	11.1	8.6	10.0	9.8	7.0	7.3
Long-term	4,120.9	8.7	54.3	45.6	8.6	4,204.1	54.1	45.6	8.5	4,217.7	73.9	60.9	13.0	3.3	2.6	2.8	2.7	2.1	2.1	1.9	2.3	1.6	2.4	2.4	2.5
of which																									
Fixed rate	3,748.1	10.7	47.1	41.8	5.3	3,787.9	44.5	44.0	0.5	3,804.6	66.9	50.8	16.1	3.2	2.4	2.7	2.3	1.8	1.3	1.7	1.7	0.7	1.5	1.6	1.7
Variable rate	326.8	9.2	4.5	2.5	2.0	356.7	7.1	1.5	5.6	350.5	3.3	9.7	-6.4	5.0	3.8	5.1	4.4	4.8	11.4	4.6	8.3	11.6	12.2	12.3	7.2
Other general government	309.7	1.3	7.0	6.7	0.3	312.8	6.6	7.2	-0.6	312.5	5.8	6.2	-0.4	11.0	5.0	5.7	3.0	4.6	2.8	4.3	3.6	3.0	2.8	1.6	1.0
Short-term	4.8	0.4	3.5	3.4	0.2	6.6	2.8	3.4	-0.6	6.9	4.2	3.8	0.3	-11.9	16.4	-0.8	5.9	78.0	62.7	95.1	73.9	64.4	61.5	52.0	44.9
Long-term	304.9	0.8	3.4	3.3	0.1	306.3	3.8	3.8	0.0	305.6	1.7	2.4	-0.7	11.5	4.8	5.9	2.9	3.6	1.9	3.1	2.7	2.2	1.9	0.9	0.4
of which																									
Fixed rate	243.5	0.8	2.6	2.4	0.2	245.7	3.0	1.8	1.2	245.0	1.1	1.7	-0.7	13.5	6.6	7.5	5.0	6.3	3.3	6.4	5.8	3.9	2.4	1.4	0.8
Variable rate	61.2	0.1	0.8	0.9	-0.1	60.3	0.8	2.0	-1.2	60.3	0.6	0.6	0.0	4.3	-1.8	-0.3	-4.7	-6.5	-3.3	-9.3	-8.8	-4.6	-0.2	-1.3	-1.4

Source: ECB securities issues statistics.

1) Data coverage for euro area residents is estimated to be around 95% of total issuance.

2) Corresponding ESA 95 sector codes: MFIs (including Eurosystem) comprises the ECB and the national central banks of the euro area (S.121) and other monetary financial institutions (S.122); financial corporations other than MFIs comprises other financial intermediaries (S.123), financial auxiliaries (S.124) and insurance corporations and pension funds (S.125); non-financial corporations (S.11); central government (S.131); other general government comprises state government (S.1312), local government (S.1313) and social security funds (S.1314).

3) The residual difference between total long-term debt securities and fixed and variable rate long-term debt securities consists of zero coupon bonds and revaluation effects.

4) Monthly averages of the transactions during this period.

5) Annual growth rates are based on financial transactions that occur when an institutional unit incurs or redeems liabilities. The annual growth rates therefore exclude the impact of reclassifications, revaluations, exchange rate variations and any other changes which do not arise from transactions.

Table 3
Debt securities issued by euro area residents in all currencies,¹⁾ by issuing sector²⁾ and maturity, seasonally adjusted
(EUR billions; nominal values)

	Amounts outstanding	Net issues					Three-month annualised growth rates of outstanding amounts ³⁾											
		Apr. 2007	Jan. 2008	Feb. 2008	Mar. 2008	Apr. 2008	2007 May	2007 June	2007 July	2007 Aug.	2007 Sep.	2007 Oct.	2007 Nov.	2007 Dec.	2008 Jan.	2008 Feb.	2008 Mar.	2008 Apr.
Total	12,262.0	63.5	20.0	42.6	6.9	67.4	11.2	9.1	9.0	7.0	7.1	9.6	8.1	9.9	5.9	5.8	2.3	3.9
Short-term	1,373.2	10.2	8.2	15.1	8.6	-12.6	27.4	17.3	19.1	19.9	36.8	51.7	41.0	30.8	14.7	15.6	9.7	3.3
Long-term	10,888.8	53.3	11.8	27.6	-1.7	80.1	9.6	8.2	7.9	5.6	4.1	5.5	4.8	7.6	4.9	4.6	1.4	4.0
MFIs	5,092.8	38.8	16.3	-12.4	-13.0	17.7	11.0	10.0	9.0	8.6	10.3	13.2	10.2	11.5	7.4	4.8	-0.7	-0.6
Short-term	793.0	4.5	-1.9	-3.9	-1.6	-10.9	19.6	11.6	17.2	-3.9	72.9	89.3	68.1	52.8	27.9	16.9	-3.6	-7.9
Long-term	4,299.8	34.4	18.2	-8.5	-11.4	28.6	9.8	9.7	7.8	6.2	2.7	4.0	2.5	5.3	4.0	2.7	-0.2	0.8
Non-MFI corporations of which	2,216.0	11.0	25.1	17.0	6.8	33.0	25.1	16.4	22.9	18.3	14.4	18.3	17.4	26.7	18.9	17.9	9.4	10.9
Financial corporations other than MFIs	1,525.6	5.6	15.5	18.5	12.2	35.3	32.1	15.4	24.1	21.8	21.2	27.9	22.3	36.1	22.9	23.5	13.4	19.3
Short-term	30.1	-0.7	0.0	13.3	-0.4	-0.7	-22.7	-6.3	-17.6	-26.5	-56.7	563.9	545.4	1,469.8	51.9	1,337.7	771.3	702.3
Long-term	1,495.4	6.4	15.6	5.2	12.6	36.0	32.7	15.6	24.5	22.3	22.1	25.9	20.4	33.1	22.5	18.7	9.7	15.8
Non-financial corporations	690.4	5.4	9.6	-1.5	-5.5	-2.3	12.7	18.5	20.5	11.6	2.2	1.3	8.2	9.5	11.1	7.0	1.5	-5.2
Short-term	128.0	3.3	3.6	-2.6	-0.9	-5.1	51.6	55.5	75.1	20.8	4.0	1.2	33.9	53.4	38.0	22.5	0.5	-22.7
Long-term	562.4	2.1	6.0	1.1	-4.6	2.8	6.3	12.2	11.4	9.8	1.9	1.3	3.2	1.5	5.6	3.7	1.8	-0.5
General government of which	4,953.2	13.6	-21.5	38.1	13.2	16.8	6.4	5.4	3.8	1.2	1.2	2.6	2.5	1.9	-0.7	1.8	2.5	5.7
Central government	4,641.2	11.9	-20.3	40.0	13.6	16.8	6.5	5.9	4.2	1.2	0.7	1.8	2.0	1.8	-0.5	2.3	2.9	6.3
Short-term	415.1	2.8	6.3	8.5	11.7	3.8	36.3	17.7	10.6	13.0	1.2	8.9	-3.0	-15.5	-13.3	-2.7	30.4	26.9
Long-term	4,226.1	9.1	-26.6	31.5	1.9	12.9	4.1	4.8	3.7	0.1	0.7	1.2	2.5	3.6	0.8	2.7	0.6	4.5
Other general government	312.0	1.7	-1.1	-1.9	-0.4	0.0	4.8	-1.1	-3.3	1.4	8.4	15.1	9.4	3.8	-3.6	-4.3	-4.3	-2.9
Short-term	7.0	0.4	0.2	-0.2	-0.2	0.3	54.9	39.4	-16.6	-2.4	301.5	665.8	600.0	3.4	-26.0	-35.8	-9.2	-6.9
Long-term	305.0	1.3	-1.3	-1.8	-0.2	-0.2	4.1	-1.7	-3.1	1.5	5.7	10.9	5.4	3.8	-3.0	-3.4	-4.2	-2.8

Source: ECB securities issues statistics.
1) Data coverage for euro area residents is estimated to be around 95% of total issuance.
2) Corresponding ESA 95 sector codes: MFIs (including Eurosystem) comprises the ECB and the national central banks of the euro area (S.121) and other monetary financial institutions (S.122); financial corporations other than MFIs comprises other financial intermediaries (S.123), financial auxiliaries (S.124) and insurance corporations and pension funds (S.125); non-financial corporations (S.11); central government (S.131); other general government comprises state government (S.1312), local government (S.1313) and social security funds (S.1314).
3) Three-month annualised growth rates are based on financial transactions that occur when an institutional unit incurs or redeems liabilities. The three-month annualised growth rates therefore exclude the impact of reclassifications, revaluations, exchange rate variations and any other changes which do not arise from transactions. The rates are annualised to allow direct comparisons with annual rates (please note that the non-adjusted rates presented in Table 2 are almost identical to seasonally adjusted annual rates).

Table 4
Quoted shares issued by euro area residents, by issuing sector ¹⁾
(EUR billions; market values)

	Amounts out-standing	Net issues	Gross issues	Redemptions	Net issues	Amounts out-standing	Gross issues	Redemptions	Net issues	Annual percentage change in market capitalisation ³⁾	Amounts out-standing	Gross issues	Redemptions	Net issues	Annual percentage change in market capitalisation ³⁾	Annual growth rates of outstanding amounts ⁴⁾												
	Apr. 2007		May 2007 - Apr. 2008 ²⁾			Mar. 2008					Apr. 2008					2006	2007	2007 Q2	2007 Q3	2007 Q4	2008 Q1	2007 Nov.	2007 Dec.	2008 Jan.	2008 Feb.	2008 Mar.	2008 Apr.	
	Total	6,760.5	12.5	9.5	3.5	6.0	5,557.5	6.5	5.8	0.6	-14.6	5,738.4	2.0	3.0	-0.9	-15.1	1.1	1.2	1.2	1.4	1.4	1.3	1.5	1.4	1.4	1.3	1.3	1.3
MFIs	1,168.6	-0.2	1.3	0.3	1.0	858.5	5.9	0.0	5.9	-22.8	835.2	1.1	0.0	1.1	-28.5	1.6	1.9	2.1	1.8	1.3	0.8	1.1	1.2	0.8	0.5	1.1	1.3	
Non-MFI corporations of which	5,591.8	12.6	8.3	3.3	5.0	4,699.0	0.6	5.8	-5.2	-13.0	4,903.2	1.0	3.0	-2.0	-12.3	1.0	1.1	1.0	1.3	1.5	1.4	1.5	1.4	1.5	1.4	1.3	1.0	
Financial corporations other than MFIs	675.5	0.1	1.8	0.7	1.2	501.3	0.0	0.5	-0.4	-22.8	519.4	0.1	0.5	-0.3	-23.1	1.6	1.3	0.9	0.9	2.7	2.5	3.1	2.8	2.6	2.4	2.3	2.2	
Non-financial corporations	4,916.3	12.5	6.4	2.6	3.9	4,197.7	0.6	5.4	-4.8	-11.6	4,383.7	0.8	2.5	-1.7	-10.8	0.9	1.1	1.0	1.3	1.3	1.3	1.4	1.3	1.3	1.3	1.2	0.9	

Source: ECB securities issues statistics.

1) Corresponding ESA 95 sector codes: MFIs refers to other monetary financial institutions (S.122); financial corporations other than MFIs comprises other financial intermediaries (S.123), financial auxiliaries (S.124) and insurance corporations and pension funds (S.125); non-financial corporations (S.11).

2) Monthly averages of the transactions during this period.

3) Percentage change between the amount outstanding at the end of the month and the amount outstanding 12 months earlier.

4) Annual growth rates are based on transactions that occur during the period and therefore exclude reclassifications and any other changes which do not arise from transactions.